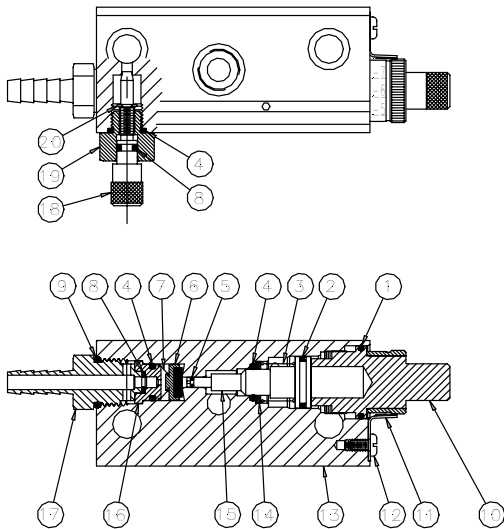
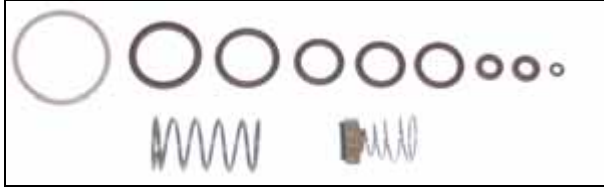


# Accu-Lube<sup>®</sup> Application Solution

## ALUMINUM PUMP REPAIR KIT Part # 9668



| DET | REQ | Kit | Description                    |
|-----|-----|-----|--------------------------------|
| 1   | 1   | 1   | O-RING .750 I.D. X .062, VITON |
| 2   | 1   | 1   | U-CUP ½ I.D. X 1/16, VITON     |
| 3   | 1   | 1   | RETURN SPRING                  |
| 4   | 3   | 3   | O-RING .301 I.D. X .070, VITON |
| 5   | 1   | 1   | O-RING .065 I.D. X .035 VITON  |
| 6   | 1   |     | EVAN VALVE SUB – ASSY.         |
| 7   | 1   |     | CONICAL EVAC. SPRING           |
| 8   | 2   | 2   | O-RING .114 I.D. X .070, VITON |
| 9   | 1   | 1   | O-RING .426 I.D. X .070, VITON |
| 10  | 1   |     | LIQUID ADJUSTMENT STEM         |
| 11  | 1   |     | RATCHET CLIP                   |
| 12  | 1   |     | 6-32 X ¼ PAN SCREW             |
| 13  | 1   |     | PUMP BODY                      |
| 14  | 1   | 1   | O-RING RETAINING RING          |
| 15  | 1   |     | 1/8" PISTON                    |
| 16  | 1   |     | SLEEVE                         |
| 17  | 1   |     | BARBED OUTLET FITTING          |
| 18  | 1   |     | AIR ADJUSTMENT STEM            |
| 19  | 1   |     | ADAPTOR                        |
| 20  | 1   |     | E-CLIP                         |

**Read instructions thoroughly before starting.**

**Note:** The pump repair kit (part9668) is only compatible with Accu-Lube pumps revision K and beyond. To ensure that your Accu-Lube pump is compatible with the repair kit look for a ratcheting clip on the back of your pump (11). Pumps built prior to this revision are not serviceable

**Note:** the lubricant adjustment stem (10) is calibrated to the individual pump body. Ensure that Lubricant adjustment stem (10) is put back on the original pump body.

1. Disassemble pump & remove all seals from each component.
  - a. Item 20 must be removed to gain access to item 8 in top view.
  - b. Items 11 & 12 must be removed to remove item 10.
  - c. Item 15 is a precision part, handle with extreme care.
  - d. Remove item 10 slowly to prevent item 15 from being damaged. Item 3 will eject item 15 upon removal of item 10.
  - e. Item 14 can not be removed because it has a press fit with item 13.
  - f. Item 16 has a friction fit with item 13. Item 16 must be removed to replace items 4, 6, & 7.
2. Dispose of used seals and springs. (items 1 through 9)
3. Wash remaining components with mineral spirits & allow items to dry.
4. Apply a film of mineral oil to all replacement seals before assembly.
5. Install item 4 in item 13 at item 4.
6. Install items 2 & 5 on item 15.
7. Install item 1 on item 10.
8. In item 13, install item 3 then item 15 and use item 10 to compress item 3 during installation.
9. Install items 11 & 12.
10. Snap item 7 to item 6 and install.
11. Install item 4 on item 16.
12. Install item 16.
13. Install item 8.
14. Install item 9 on item 17.
15. Install item 17. (item 17 can be used to properly locate item 16)
16. Install item 8 on item 18.
17. Install item 18 in item 19.
18. Install item 20 to item 18.
19. Install item 4 on item 19.
20. Install item 19 to item 13.

### ITW ROCOL North America

3624 West Lake Avenue, Glenview, Illinois 60026

Tel (800) 452-5823, Tel (847) 657-5359

Fax (800) 952-5823, Fax (847) 657-4897

www.rocolnorthamerica.com