



APPLICATION CASE STUDY

COMPANY DETAILS – Franklin Aluminum Company

Franklin Aluminum Company, located in Franklin, Georgia, is the world’s largest roof rack manufacturer. This ISO 9000, ISO 9001 and QS plant works on a 3 shifts 24/7 is the leading Tier One supplier to Automotive Manufacturers.



Accu-Lube PRODUCTS IN USE

Accu-Lube Lubricants
Accu-Lube Equipment for Near Dry Machining

CUSTOMER NEEDS IDENTIFIED

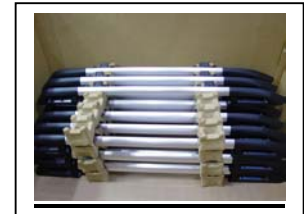
Mike Traylor, Tool Manager, explains: “Before we switched to Accu-Lube®, we were using 20 oz. of lubricants per machine each day. The lubricant usage per machine was 60,000 oz./year. Today it is only 32 oz./month/machine, 384 oz./year/machine. For the entire plant as we run on average 20 machines per day, we are now using 7,680 oz of lubricant/year instead of 120,000 oz/year!”



ACCEPTED BENEFITS

Accu-Lube® offers a complete line of natural-based lubricants along with specially developed, patented micro-lubrication systems for Near Dry Machining, eliminating flood coolant for easier, safer and more profitable operations. Accu-Lube® lubricants are non-toxic, environmentally safe and can be applied to a variety of materials without fear of contamination and discoloration. As a result, the production process becomes more efficient, worker safety is increased and the bottom line is improved. Franklin Aluminum uses Accu-Lube® lubricants and equipment mainly for punching and drilling.

- **Cost Savings**
- **Housekeeping Improvements**
- **Increase Tool Life and Quality**
- **Easy Installation – No Maintenance**



VALUE TO CUSTOMER

Franklin Aluminum decided to go to a Micro-Lubrication system 6 years ago and each of its manufacturing cell is equipped with it’s own Accu-Lube system. Franklin Aluminum is using Accu-Lube® applicators equipped with 1 to 14 nozzles with continuous success.

Area: North America – Georgia

Date: Jan 00 - Ongoing

ITW Rocol North America

3624 West Lake Avenue • Glenview, IL 60026 • Tel: 800-452-5823 • Fax: 800-952-5823

www.rocolnorthamerica.com