

Maximizing Metalworking Fluid Life

LO³IC 1. Maximum Life Cutting Fluids

TRI-LO³IC™ ML

MAXIMUM LIFE CUTTING FLUID

Multi-purpose water-soluble oil for machining ferrous and nonferrous metals.

TRI-LO³IC™ EP

MAXIMUM LIFE EXTREME PRESSURE CUTTING FLUID

Multi-purpose water-soluble oil with EP additives for demanding operations.

TRI-LO³IC™ AL

MAXIMUM LIFE ALUMINUM CUTTING FLUID

Heavy-duty water-soluble oil for machining aluminum.

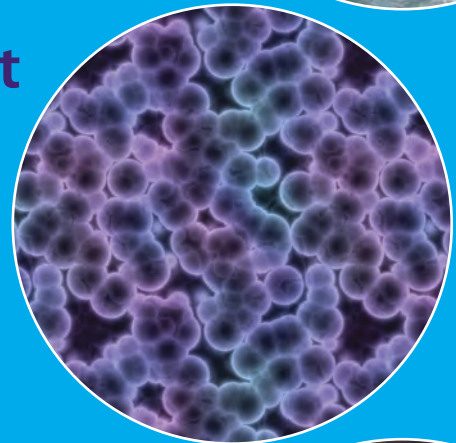


LO³IC 2. Slideway Lubricant

TRI-LO³IC™ VG68

BACTERIA RESISTANT SLIDEWAY LUBRICANT

Antimicrobial slideway lubricant that extends cutting fluid life.

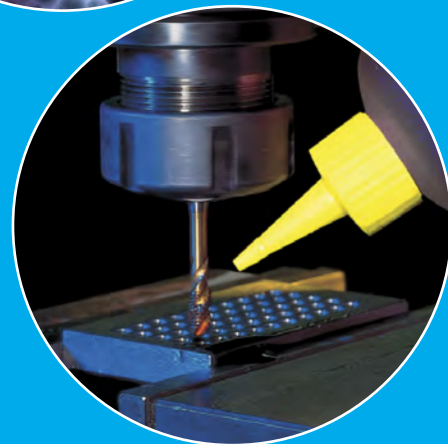


LO³IC 3. Tapping Fluid

TRI-LO³IC™ RTD

FORTIFYING TAPPING FLUID

Heavy-duty tapping fluid with extreme pressure and antimicrobial additives.



TRI-LOGIC™ SYSTEM

LOGIC 1.

Cutting fluids formulated to resist bacteria and fungus growth.

Bacteria and fungus only exist in places with a readily available source of food, remove the food source and it is much harder for these microbes to survive. All raw materials in TRI-Logic products have been carefully selected to be inherently resistant to microbial degradation.

LOGIC 2.

Slideway lubricant that extends cutting fluid life.

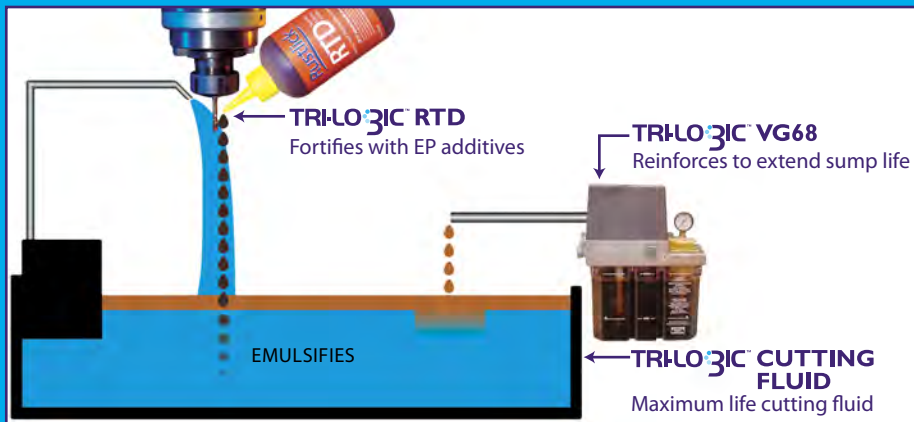
The main cause of tramp oil in cutting fluid is the slideway lubricant that drains into the sump. Tramp oil not only provides an excellent food source for bacteria and fungus, it also creates a prime environment for anaerobic bacteria which produce the characteristic "rotten egg" odor.

TRI-Logic VG68 Slideway Lubricant has antimicrobial additives that transfer into cutting fluid to actively reinforce its antimicrobial properties and prevent microbe growth.

LOGIC 3.

Tapping fluid that fortifies cutting fluid life.

Formulated using bacteria-resistant raw materials, TRI-Logic RTD emulsifies into cutting fluid to strengthen its EP properties for enhanced tool life and excellent surface finish.



3 STEP SOLUTION SYSTEM

Rustlick takes a 3 step approach to attack bacteria and fungus head on with the TRI-Logic System. Together these steps work to maximize cutting fluid life and performance.

	TRI-Logic ML	TRI-Logic EP	TRI-Logic AL	TRI-Logic VG68	TRI-Logic RTD	
Description	Water-soluble oil	Water-soluble oil	Water-soluble oil	Slideway lubricant	Tapping fluid	
Appearance	Light brown liquid	Light brown liquid	Light brown liquid	Dark brown liquid	Dark brown liquid	
Dilute color	Milky white	Milky white	Milky white	Not applicable	Not applicable	
pH (at 10%)	9.5	9.5	9.3	Not applicable	Not applicable	
Density	7.9 lbs/gal (945 kg/m ³)	8.0 lbs/gal (957 kg/m ³)	8.3 lbs/gal (993 kg/m ³)	8.3 lbs/gal (993 kg/m ³)	7.9 lbs/gal (950 kg/m ³)	
EP additives	Non-Cl	Cl & Non-Cl	Non-Cl	Non-Cl	Cl & Non-Cl	
Flash point	> 220°F (104°C)	> 220°F (104°C)	> 220°F (104°C)	> 220°F (104°C)	> 212°F (100°C)	
Part no.	1 gal (4/cs)				69001	
	5 gal	69205	69305	69105	69505	69005
	55 gal	69255	69355	69155	69555	69055
	Other					12 oz (6/cs): 69016